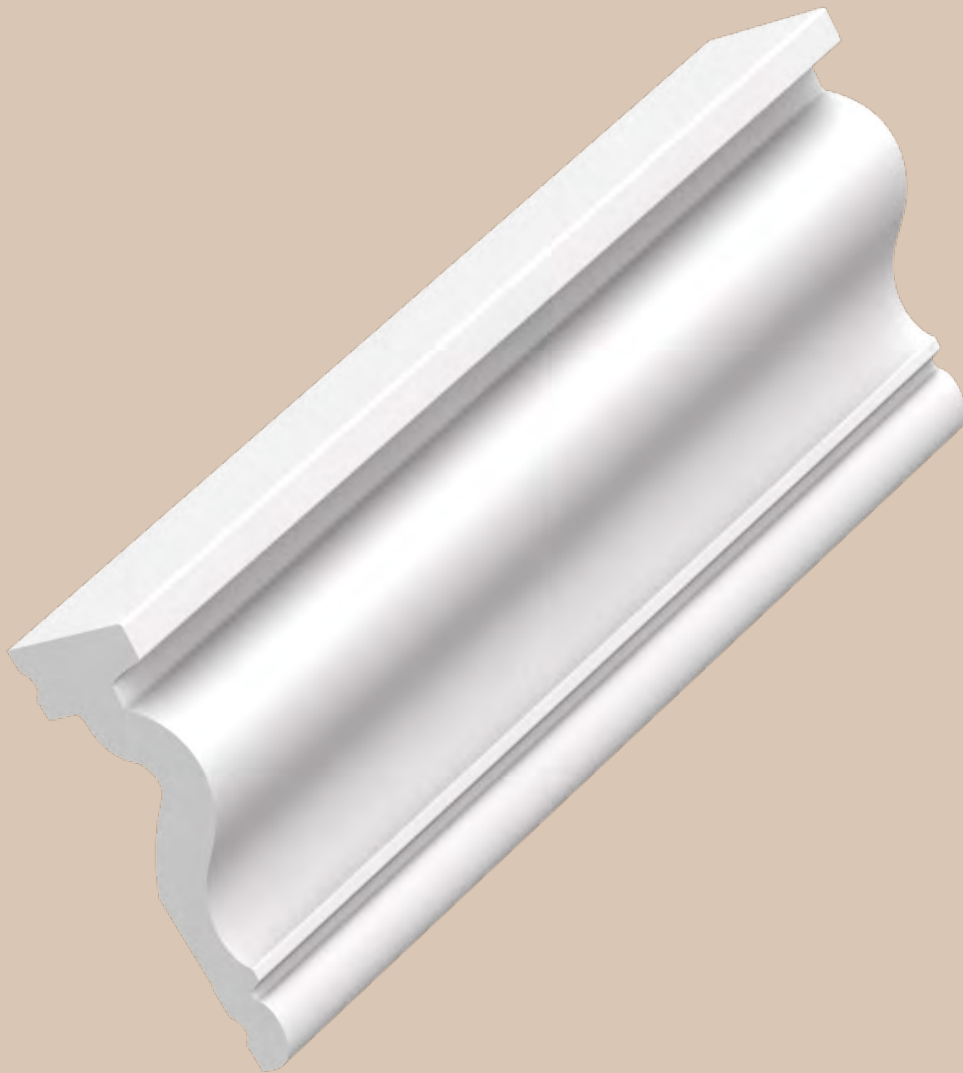


INSTALLATION INSTRUCTIONS

PANEL MOULDINGS

MPC036-012 - 06/2023



Ready? Set? Go!
✓ INSTALLATION
GUARANTEE

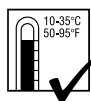
3 steps to the Perfect Finish

WWW.ORACDECOR.COM

1 Ready?

Preparation

ATMOSPHERE



Storage and installation conditions:

For perfect ORAC installations ensure that the room temperature is at least 5°C/ 41° Fahrenheit or more. When products are installed in freezing conditions the adhesives will fail.



Humidity:

Should be between 40 – 70% for perfect installation.



Decorating:

Allow at least 24 hours before decorating your Orac Decor® products.

SURFACE



Dust free



Sand and wash surface



Flat walls & ceilings



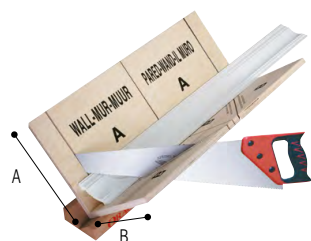
Dry surface



No grease

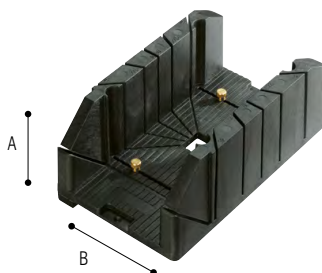
Tools

ACCESSORIES



FB300 (+FB14)

A: 29,7 cm
B: 29,1 cm



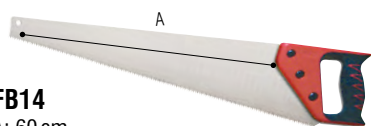
FB13

A: 12,5 cm
B: 15,5 cm



FB10 (+FB14 + FB15 + A38)

A: 27,5 cm
B: 22 cm



FB14

A: 60 cm

Only available with FB300 or FB10 mitre blocks



FB15



A38

Sample service

Ready to mix-and-match? You can create your dream interior by combining different Orac Decor® products. Can't quite work it out or just not sure what your perfect match is? Then order a sample of your favourite products!

Product image: P3071



https://www.oracdecor.com/en_gb/order-samples

Order your sample here



2 Set?

DecoFix Adhesives

For Purotouch[®] | Duropolymer[®] | Durofoam[®]
Safety data sheet available at www.oracdecor.com

ONLY FULL GUARANTEE WITH DECOFIX



DecoFix Glue Calculator

https://www.oracdecor.com/en_gb/glue-calculator



DecoFix POWER

FDP700 290 ml > 7 - 8 m

ULTRA STRONG



Heavy profiles

or



Exterior



Non-porous surface



Humid surface



Soap



FDP700 ULTRA STRONG INSTALLATION ADHESIVE SEAL WALL/CEILING

Extra strong installation glue for all surfaces/purposes:

- New build, exterior applications
- Non-porous (tiles, glass, ...) surfaces
- Damp environments, including bathrooms
- Large/heavy profiles, curtain profiles, 3D Wall Covering products
- Cover skirting
- Orac Xterio[®]-cornices

- Extra strong MS polymer glue
- Remove with soap solution
- Paintable after hardening (min. 24 hours)



DecoFix ULTRA

FX400 270ml > min. 80 m

JOINTS



Interior



Exterior



Soap



FX400 JOINT ADHESIVE GLUE MOULDINGS TOGETHER

Strong adhesive for every mitre and end joint, for indoor and outdoor

- White polymer-based adhesive, no shrinkage
- Clean excess adhesive with a painter's knife and soapy water within 10min after application
- Paintable after hardening (min. 24 hours)



DecoFiller

FL300 310 ml > 30 m

FILLING & FINISHING



Interior



Shrinkfree



Paintable



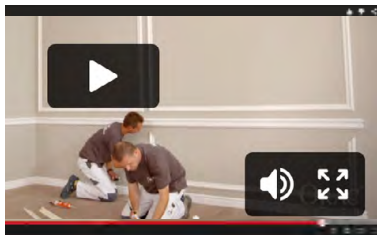
FL300 FILLER

For finishing of gaps cracks and irregularities in profiles or on walls
(after installation, between profiles and between profiles and wall/ceiling).
For indoor

- Ready to use lightweight acrylic filler, shrink-proof, does not crack
- Remove with humid sponge or cloth
- Rapidly repaintable (after 15 min.)

3 Go!

Installation of Panel mouldings

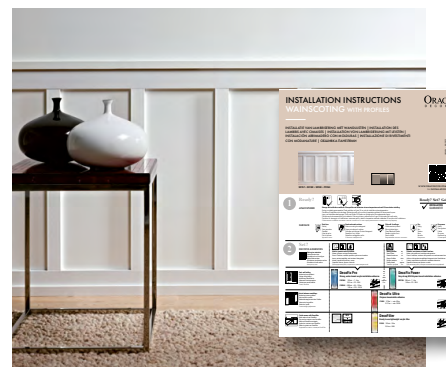


ALSO AVAILABLE



Installation videos

https://www.oracdecor.com/en_gb/installation#video

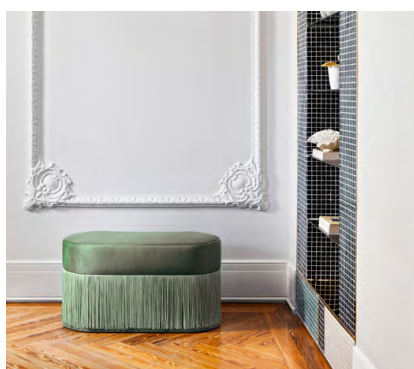


Wainscoting with (multifunctional) profiles

Application possibilities



From simple and smooth ...



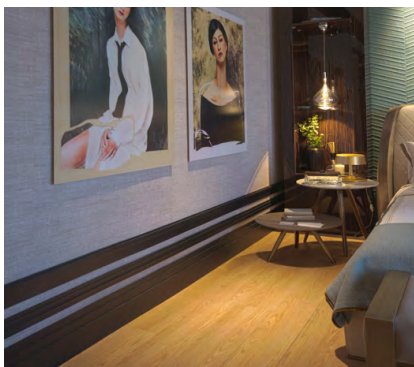
... to finely sculptured. We also offer various corner elements to create lovely wall frames



Many references are available in a flexible format for use on flat or curved surfaces



View our range of multifunctional mouldings, which serve as cornice, wall moulding and skirting!



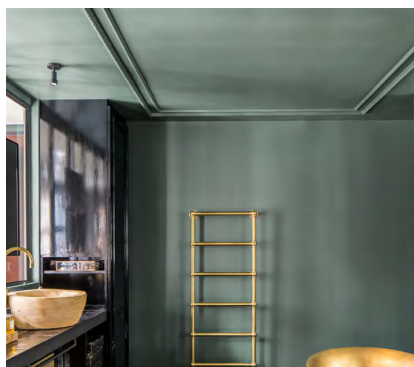
Combine with panel moulding to create a raised baseboard ...



... or similar on the ceiling



Combine with wall paper



... or be creative on the ceiling



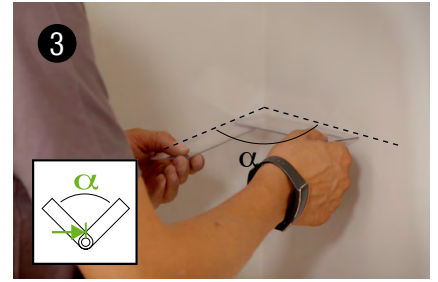
Use wall panels to decorate furniture



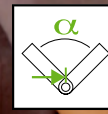
1 **Measure** | Measure the required/desired distances from wall to floor



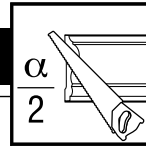
2 **Mark out** | Mark out the lines with a spirit level.



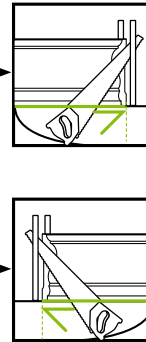
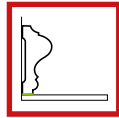
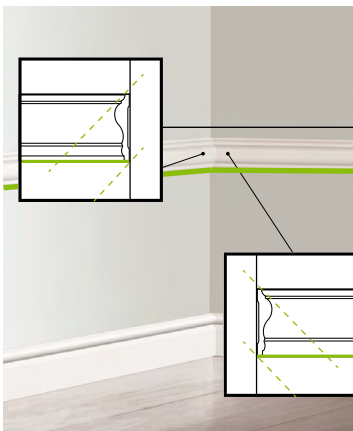
3 **Determine the angle** | Read the size of the angle using our protractor FB15.



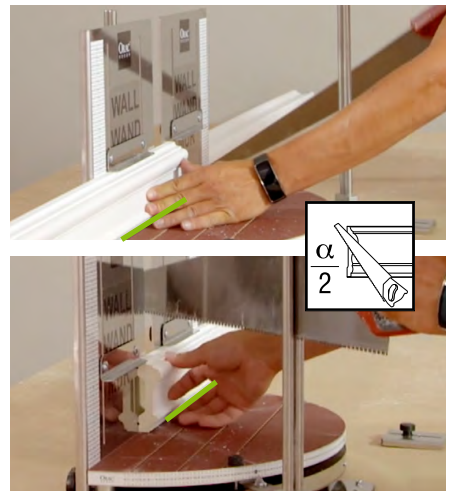
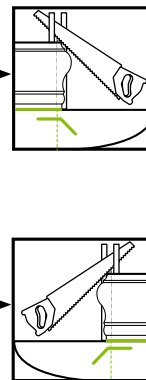
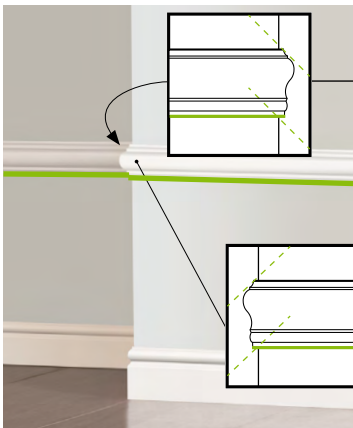
MITRING



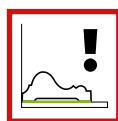
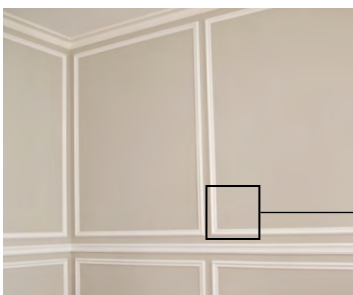
4a Inside corner



4b Outside corner



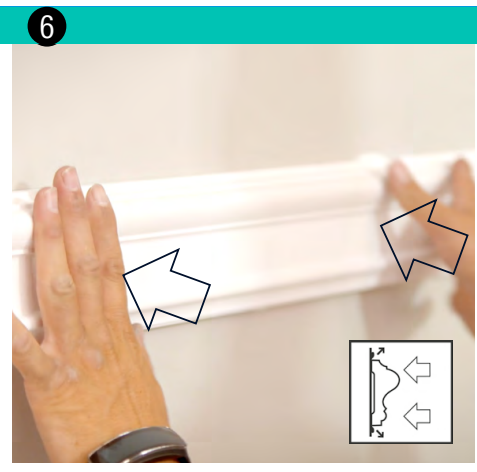
4c Frame



POSITION AND FINISH OFF



5 **Apply DecoFix Power in V-Fix over the entire length** | To apply an adequate quantity of DecoFix Power, first take a stanley knife and trim the nozzle at 45deg allowing an application of at least 8mm diameter of adhesive. Use the V groove on the back of most cornice mouldings to guide the nozzle as you apply adhesive. Note the V groove will not stick if adhesive is only hidden within the V groove, the adhesive must overspill the indentation to work.



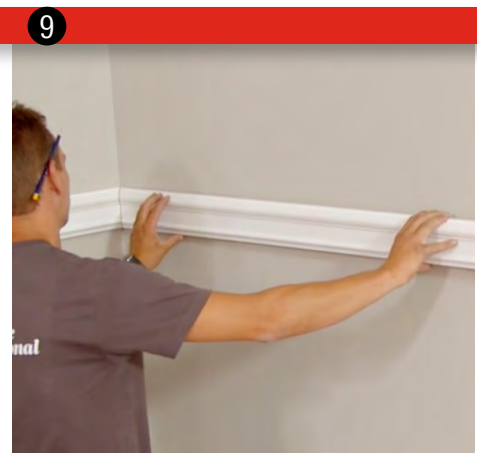
6 **Push firmly** | Put the skirting into place, checking that it is horizontal. When you are confident the skirting is positioned correctly, firmly press it to the wall across the entire length.



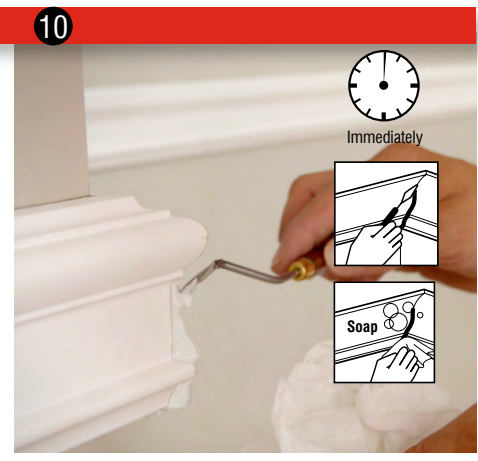
7 **Cleaning overspill**
Any overspill of DecoFix Power can easily be removed with water and soap.



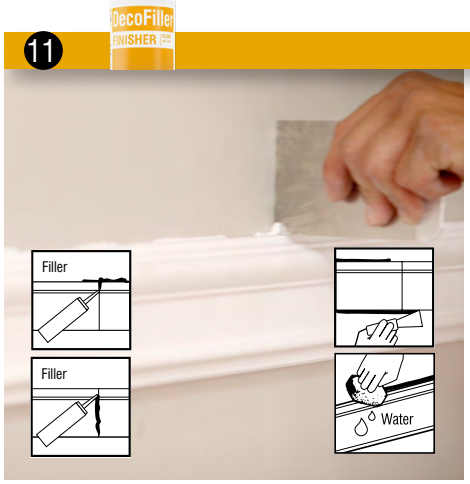
8 **Use DecoFix Ultra on every joint.**



9 **Push firmly and securely into the joint.** The adhesive must come out all over the joint.



10 **Clean** | Clean excess adhesive with a painter's knife and soapy water within 10min after application.



11 **Use DecoFiller to smooth out all visible joints** | If there are minor irregularities on your skirting these can be filled with our FL300. You might find it easier to do this 24 hours after the initial installation.



12 **Prepare for paint** | All Orac Decor® mouldings already have a white primer applied, but still need to be overpainted with a suitable paint. For good adhesion, lightly rub the length of the moldings with a 320 gram sandpaper.



13 **Decorating** | Allow at least 24 hours before decorating your Orac Decor® products. For best results add an undercoat and top coat of paint. On new builds apply a mist coat and top coat the following day.