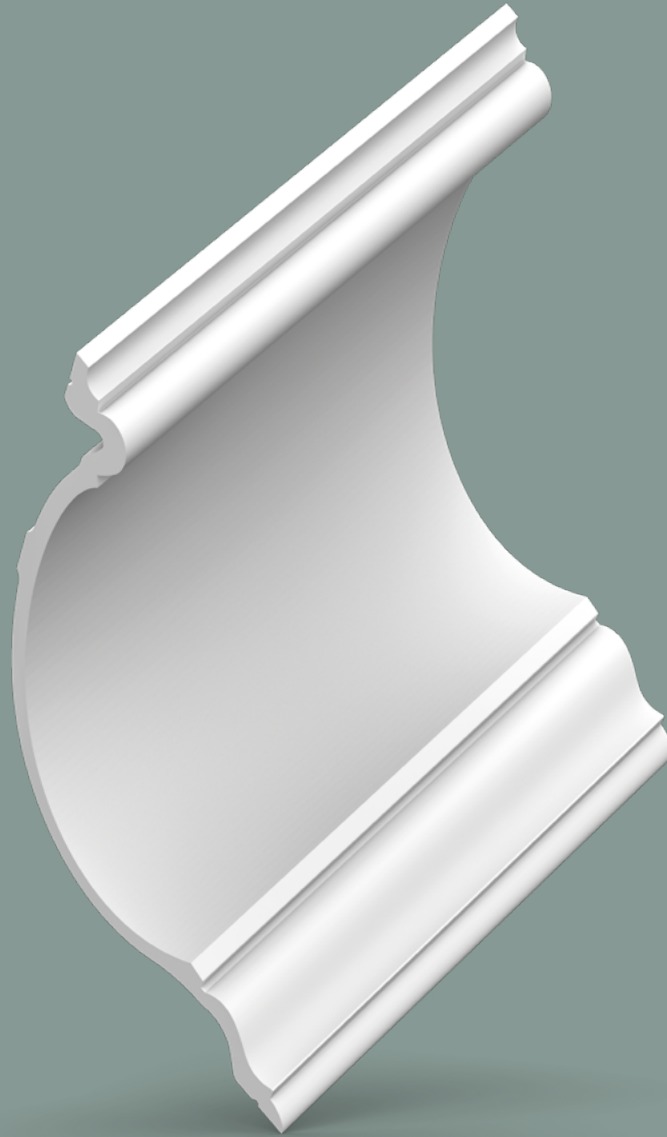


INSTALLATION INSTRUCTIONS

COVING



Ready? Set? Go!
✓ INSTALLATION
GUARANTEE

3 steps to the Perfect Finish

WWW.ORACDECOR.COM

1 Ready?

Preparation

ATMOSPHERE & SURFACE



Storage and Installation Conditions:

For perfect ORAC installations ensure that the room temperature is 5°C and rising. When products are installed in freezing conditions the adhesives will fail.



Humidity:

Should be between 40 – 70% for perfect installation.



Decorating:

Allow at least 24 hours before decorating your Orac Decor® products.



Dust free



Sand and wash surface



Flat walls & ceilings



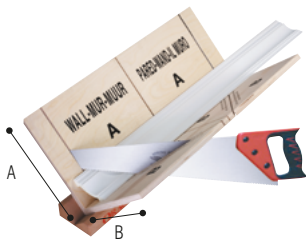
Dry surface



No grease

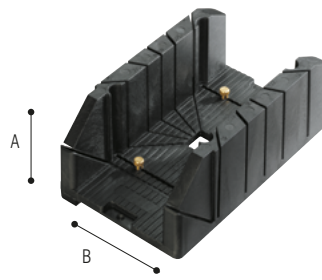
Tools

ACCESSORIES



FB300 (+FB14)

A: 29,7 cm
B: 29,1 cm



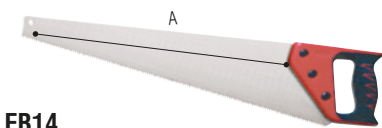
FB13

A: 12,5 cm
B: 15,5 cm



FB10 (+ FB14 + FB15 + A38)

A: 27,5 cm
B: 22 cm



FB14

A: 60 cm

Only available with FB300 or FB10 mitre blocks



FB15



A38

Sample service

Ready to mix-and-match? You can obtain your dream interior by combining different Orac Decor® products.

Can't quite work it out or just not sure what your perfect match is? Then order a sample of your favourite products!

Product image: C392



https://www.oracdecor.com/en_gb/order-samples

Order your sample here



2 Set?

DecoFix Adhesives

ONLY FULL GUARANTEE WITH DECOFIX



DecoFix Glue Calculator

https://www.oracdecor.com/en_gb/glue-calculator



DecoFix POWER

FDP700 290 ml > 7 - 8 m

ULTRA STRONG

Purotouch[®] | Duropolymer[®] | Durofoam[®]



or



Heavy profiles

Exterior

Non-porous surface

Humid surface

Soap/Water



FDP700 ULTRA STRONG ADHESIVE SEAL WALL/CEILING

This adhesive can be used on new build, exterior and interior applications including bathrooms.

Extra strong MS polymer glue for new build, all exterior applications, non-porous (tiles, glass, ...) surfaces and damp environments

- Remove with soap solution
- Paintable after hardening (min. 24 hours)
- Use DecoFix Extra for joints (Purotouch[®] + Duropolymer[®])



DecoFix EXTRA

FX200 310 ml > 80 m
FX210 80 ml > 20 m

JOINTS

Purotouch[®] | Duropolymer[®] | ~~Durofoam[®]~~



Joints

Interior

Exterior

Synth. thinner/Aceton



FX200 JOINT ADHESIVE GLUE MOULDINGS TOGETHER

Only full warranty on installations where FX200/FX210 is used on every mitre and end joint. Failure to use this adhesive may result in open joints which are very difficult to repair.

Polyurethane-based glue to join mouldings together

- Remove excess glue before hardening (max. 1 hour and repeat after 2-3 hours)
- Clean with acetone or synthetic thinner
- Can be painted after 24 hrs
- The more humidity, the faster the drying time

*Durofoam[®]: use DecoFix Pro or DecoFix Power for joints



DecoFiller

FL300 310 ml > 30 m

FILLING & FINISHING

Purotouch[®] | Duropolymer[®] | Durofoam[®]



Interior

Shrinkfree

Paintable

Water



FL300 FILLER

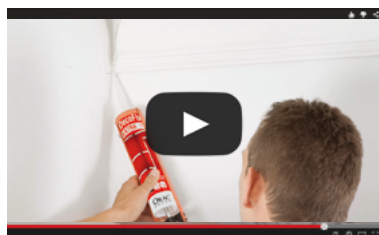
Use the FL300 filler to repair/smoothen out any unevenness in the installation or rectify small imperfections on the wall and ceiling where Orac Decor[®] mouldings are being installed. This product will not make a permanent repair whenever our FX200/FX210 joint adhesive has not been used.

Ready to use lightweight acrylic filler

- For shrink-proof finishing of gaps (between decorative profiles after adhesion, between wall and profiles, between walls and between wall and ceiling), cracks and irregularities in profiles or on walls
- Rapidly repaintable (after 15 min.)
- Does not crack

3 Go!

Installation of Coving



ALSO AVAILABLE



Installation videos

https://www.oracdecor.com/en_gb/installation#video

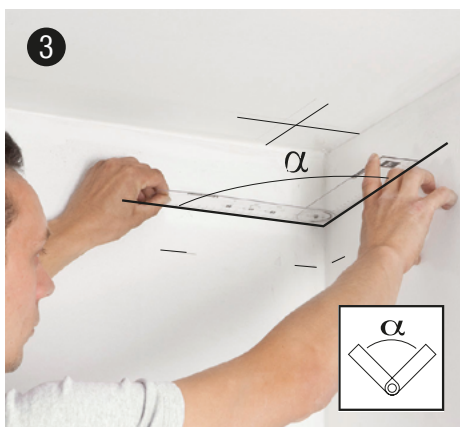
MARK OUT INSTALLATION



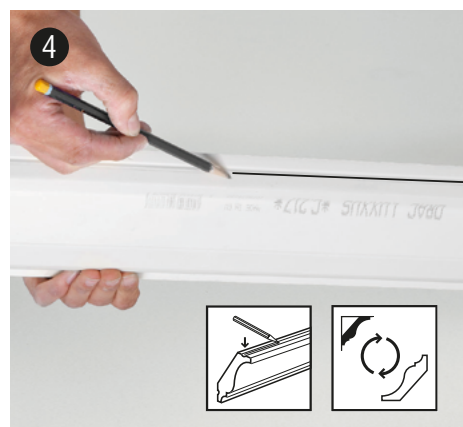
Mark out | Mark the bottom of the cornice on the wall. Make sure the moulding is positioned correctly at 90°



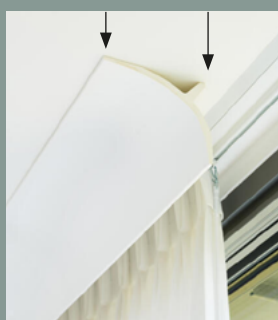
Draw the miter angle on the coving | to make sure you place the frame correctly in the miter box.



Determine the angle | Read the size of the angle using our protractor FB15.



Marking the ceiling side | Add a black line to the ceiling side of the coving. When cutting place black line edge at bottom of miter box! With other words, flip the moulding.



FOR PELMET COVING

Choice of over 10 classic and modern models.

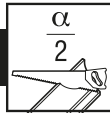
Each of these products can be securely fixed to the ceiling by providing two beads of DecoFix Power on the reverse of the coving. To avoid any product discoloration from UV light, we recommend that the exposed area of cornice is decorated.

Interested? Have a look at all our pelmet products:



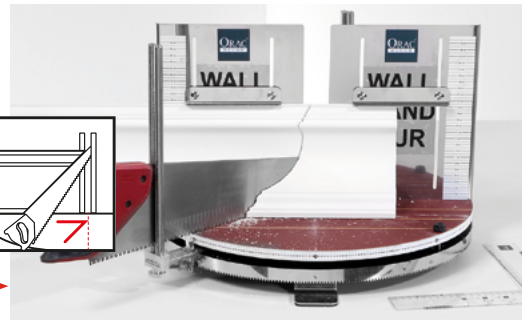
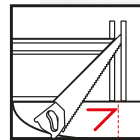
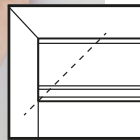
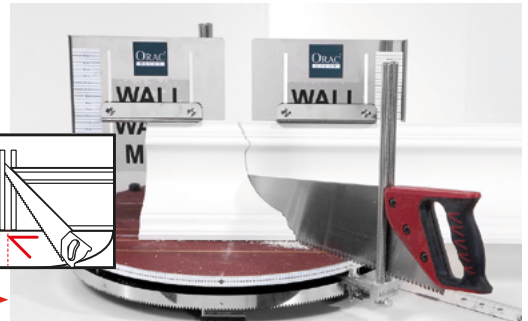
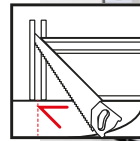
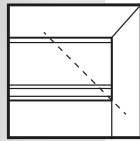
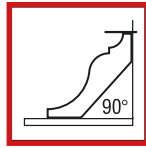
https://www.oracdecor.com/en_gb/coving/pelmet

MITRING

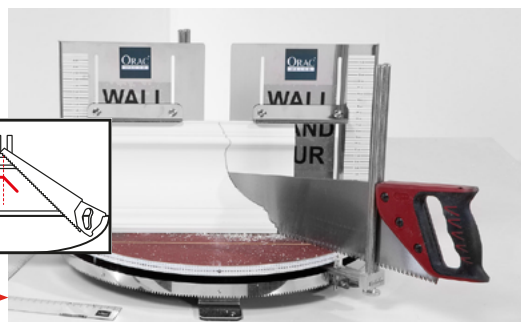
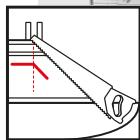
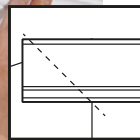
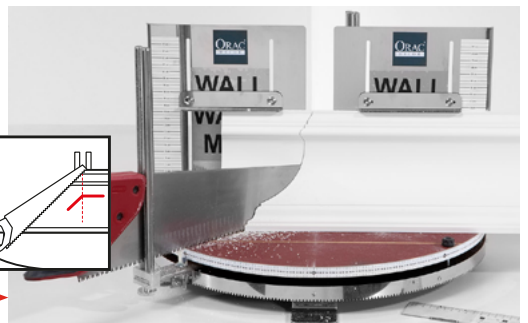
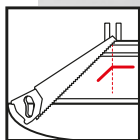
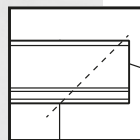
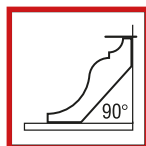


Always put the top edge of the coving onto the bottom of the mitre box (fig.4). With other words, flip the coving.

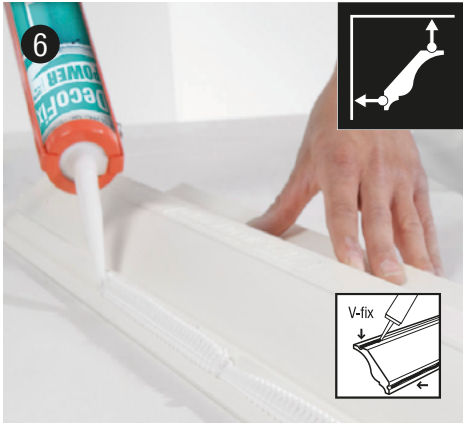
5a Inside corner



5b Outside corner



POSITION AND FINISH OFF



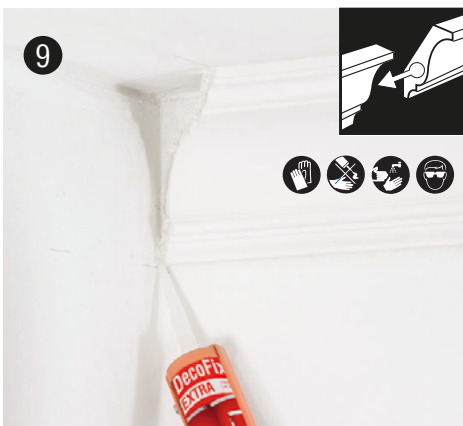
Apply DecoFix Power in V-Fix over the entire length | To apply an adequate quantity of DecoFix Power, first take a stanley knife and trim the nozzle at 45deg allowing an application of at least 8mm diameter of adhesive. Use the V groove on the back of most cornice mouldings to guide the nozzle as you apply adhesive. Note the V groove of the coving will not stick to the ceiling if adhesive is only hidden within the V groove, the adhesive must overspill the indentation to work.



Push firmly | Ensure that you apply the marked edge to the ceiling. Put the coving into place, checking that it is horizontal and symmetrical to the wall and ceiling. When you are confident the coving is positioned correctly, firmly press it to the wall and ceiling across the entire length.



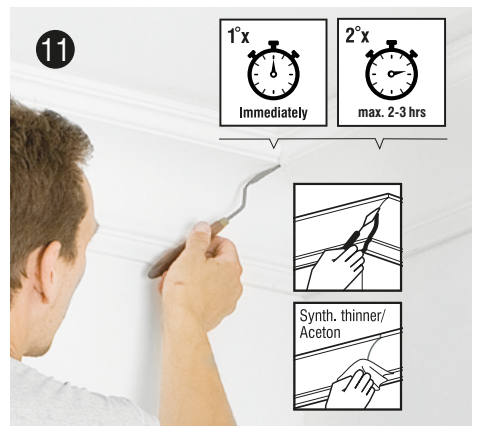
Cleaning overspill | Any overspill of DecoFix Pro can easily be removed with water. Any overspill of DecoFix Power can easily be removed with water and soap.



Use DecoFix Extra on every joint | Apply a generous amount of DecoFix Extra adhesive to each end of the molding and ensure both ends are completely covered. Read safety instructions on cartridge.



Push both mouldings firmly and securely together. Excess adhesive should seep through the join.



Clean | Wipe off the residue immediately so that it is flush with the moulding. You can repeat this process one hour later. Use a cloth dipped in pure acetone to remove adhesive residue.



Use DecoFiller to smooth out all visible joints | If there are minor irregularities on your coving joints these can be filled with our FL300. You might find it easier to do this 24 hours after the initial installation.



Prepare for paint | All Orac Decor[®] mouldings already have a white primer applied, but still need to be overpainted with a suitable paint. For good adhesion, lightly rub the length of the moldings with a 320 gram sandpaper.



Decorating | Allow at least 24 hours before decorating your Orac Decor[®] products. For best results add an undercoat and top coat of paint. On new builds apply a mist coat and top coat the following day.