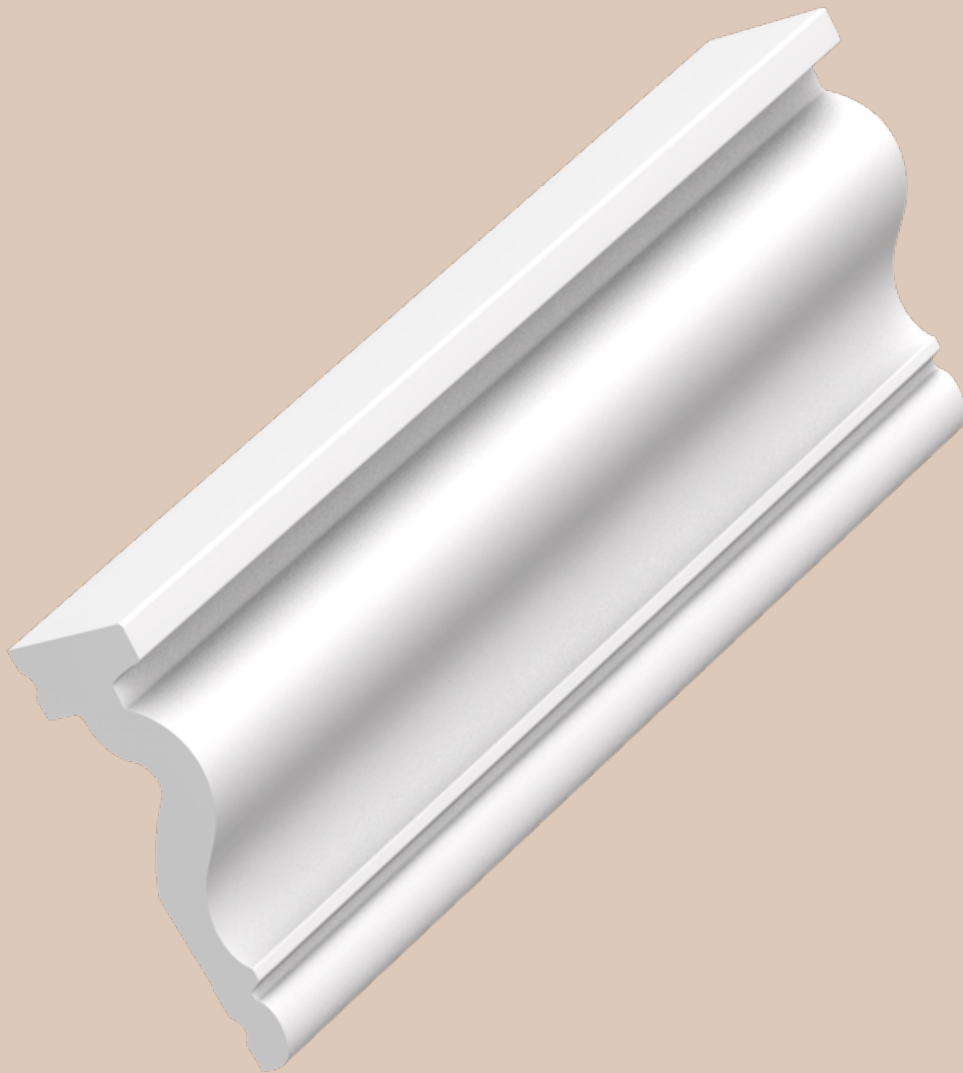


# INSTALLATION INSTRUCTIONS

## PANEL MOULDINGS

---



Ready? Set? Go!  
✓ INSTALLATION  
GUARANTEE

3 steps to the Perfect Finish

[WWW.ORACDECOR.COM](http://WWW.ORACDECOR.COM)

# 1 Ready?

## Preparation

### ATMOSPHERE & SURFACE



**Storage and Installation Conditions:**

For perfect ORAC installations ensure that the room temperature is 5°C and rising. When products are installed in freezing conditions the adhesives will fail.



**Humidity:**

Should be between 40 – 70% for perfect installation.



**Decorating:**

Allow at least 24 hours before decorating your Orac Decor® products.



Dust free



Sand and wash surface



Flat walls & ceilings



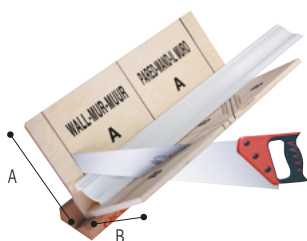
Dry surface



No grease

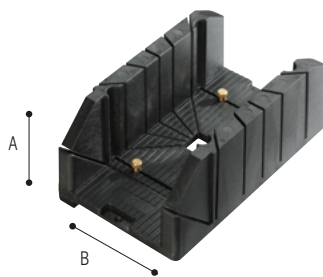
## Tools

### ACCESSORIES



**FB300 (+FB14)**

A: 29,7 cm  
B: 29,1 cm



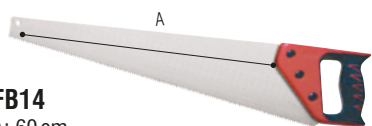
**FB13**

A: 12,5 cm  
B: 15,5 cm



**FB10 (+FB14 + FB15 + A38)**

A: 27,5 cm  
B: 22 cm



**FB14**

A: 60 cm

Only available with FB300 or FB10 mitre blocks



**FB15**



**A38**

## Sample service

Ready to mix-and-match? You can create your dream interior by combining different Orac Decor® products. Can't quite work it out or just not sure what your perfect match is? Then order a sample of your favourite products!

Product image: SX163



[https://www.oracdecor.com/en\\_gb/order-samples](https://www.oracdecor.com/en_gb/order-samples)

Order your sample here



2 Set?

# DecoFix Adhesives

ONLY FULL GUARANTEE WITH DECOFIX



## DecoFix Glue Calculator

[https://www.oracdecor.com/en\\_gb/glue-calculator](https://www.oracdecor.com/en_gb/glue-calculator)



## DecoFix POWER

FDP700 290 ml > 7 - 8 m

### ULTRA STRONG

Purotouch® | Duropolymer® | Durofoam®



Heavy profiles



Exterior



Non-porous surface



Humid surface



Soap solution



Paintable after hardening



Use DecoFix Extra for joints



DecoFix Extra

## FDP700 ULTRA STRONG ADHESIVE SEAL WALL/CEILING

This adhesive can be used on new build, exterior and interior applications including bathrooms.

Extra strong MS polymer glue for new build, all exterior applications, non-porous (tiles, glass, ...) surfaces and damp environments

- Remove with soap solution
- Paintable after hardening (min. 24 hours)
- Use DecoFix Extra for joints (Purotouch® + Duropolymer®)



## DecoFix EXTRA

FX200 310 ml > 80 m  
FX210 80 ml > 20 m

### JOINTS

Purotouch® | Duropolymer® | ~~Durofoam®~~



Joints



Interior



Exterior



Synth. thinner/Aceton



## FX200 JOINT ADHESIVE GLUE MOULDINGS TOGETHER

Only full warranty on installations where FX200/FX210 is used on every mitre and end joint. Failure to use this adhesive may result in open joints which are very difficult to repair.

Polyurethane-based glue to join mouldings together

- Remove excess glue before hardening (max. 1 hour and repeat after 2-3 hours)
- Clean with acetone or synthetic thinner
- Can be painted after 24 hrs
- The more humidity, the faster the drying time

\* Durofoam®: use DecoFix Pro or DecoFix Power for joints



## DecoFiller

FL300 310 ml > 30 m

### FILLING & FINISHING

Purotouch® | Duropolymer® | Durofoam®



Interior



Shrinkfree



Paintable



Water

## FL300 FILLER

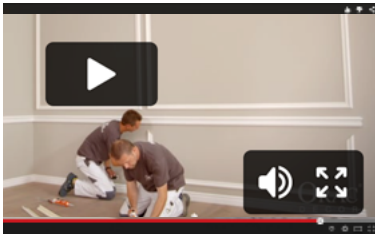
Use the FL300 filler to repair/smoothen out any unevenness in the installation or rectify small imperfections on the wall and ceiling where Orac Decor® mouldings are being installed. This product will not make a permanent repair whenever our FX200/FX210 joint adhesive has not been used.

Ready to use lightweight acrylic filler

- For shrink-proof finishing of gaps (between decorative profiles after adhesion, between wall and profiles, between walls and between wall and ceiling), cracks and irregularities in profiles or on walls
- Rapidly repaintable (after 15 min.)
- Does not crack

**3** Go!

# Installation of Panel mouldings

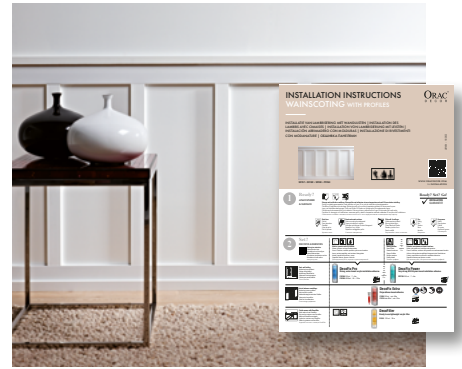


ALSO AVAILABLE



Installation videos

[https://www.oracdecor.com/en\\_gb/installation#video](https://www.oracdecor.com/en_gb/installation#video)



Wainscoting with (multifunctional) profiles

## Application possibilities



From simple and smooth ...



... to finely sculptured. We also offer various corner elements to create lovely wall frames



Many references are available in a flexible format for use on flat or curved surfaces



View our range of multifunctional mouldings, which serve as cornice, wall moulding and skirting!



Combine with panel moulding to create a raised baseboard ...



... or similar on the ceiling



Combine with wall paper



... or be creative on the ceiling



Use wall panels to decorate furniture

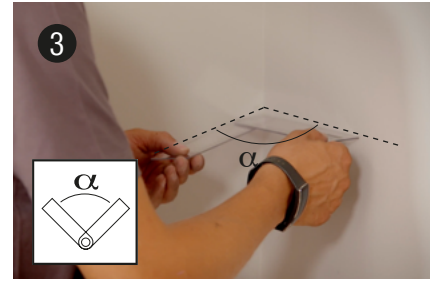




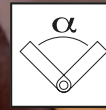
**1**  
**Measure** | Measure the required/desired distances from wall to floor



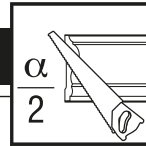
**2**  
**Mark out** | Mark out the lines with a spirit level.



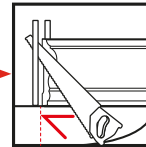
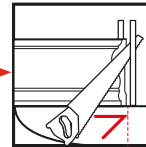
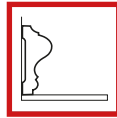
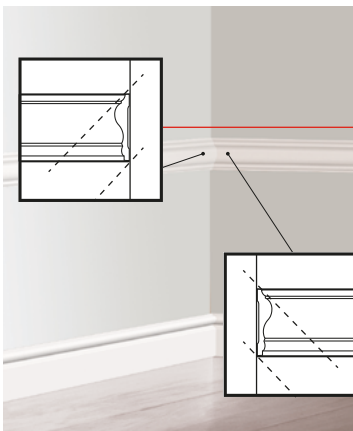
**3**  
**Determine the angle** | Read the size of the angle using our protractor FB15.



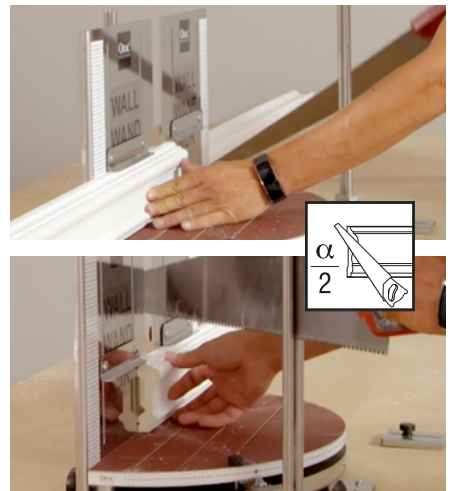
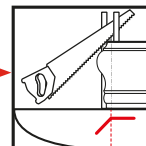
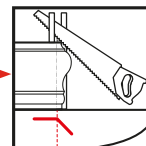
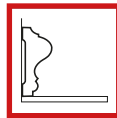
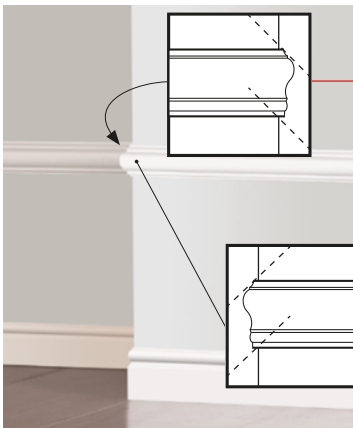
## MITRING



### 4a Inside corner



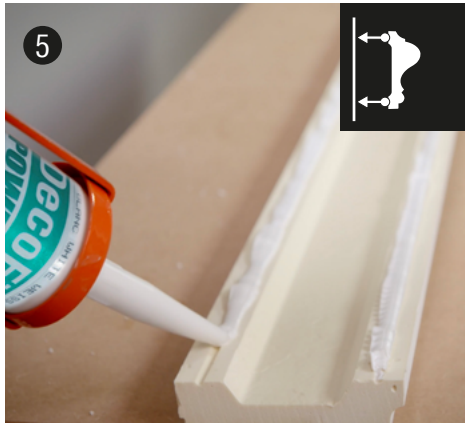
### 4b Outside corner



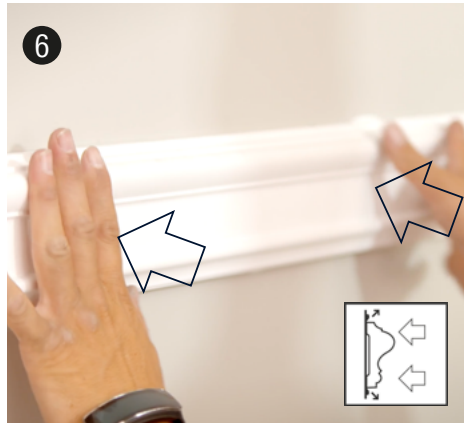
### 4c Frame



**POSITION AND FINISH OFF**



**5**  
**Apply DecoFix Power in V-Fix over the entire length** | To apply an adequate quantity of DecoFix Power, first take a Stanley knife and trim the nozzle at 45deg allowing an application of at least 8mm diameter of adhesive. Use the V groove on the back of most cornice mouldings to guide the nozzle as you apply adhesive. Note the V groove will not stick if adhesive is only hidden within the V groove, the adhesive must overspill the indentation to work.



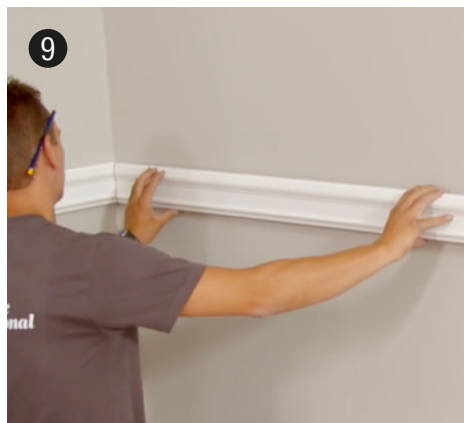
**6**  
**Push firmly** | Put the skirting into place, checking that it is horizontal. When you are confident the skirting is positioned correctly, firmly press it to the wall across the entire length.



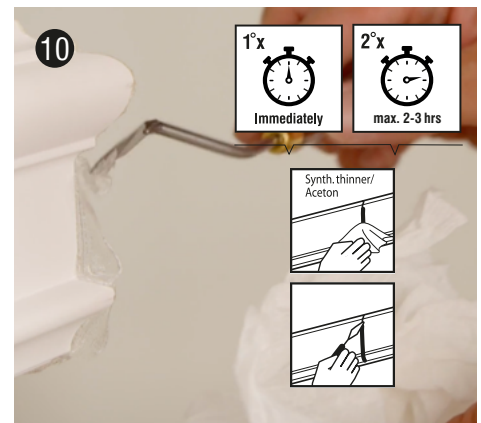
**7**  
**Cleaning overspill** | Any overspill of DecoFix Pro can easily be removed with water. Any overspill of DecoFix Power can easily be removed with water and soap.



**8**  
**Use DecoFix Extra on every joint** | Butter up each end with a complete covering of DecoFix Extra adhesive. Read safety instructions on cartridge.



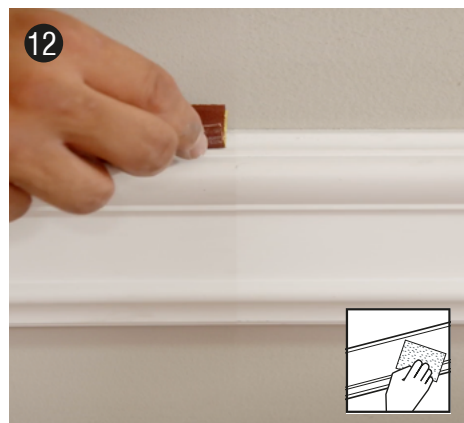
**9**  
**Push firmly and securely into the joint.** The adhesive must come out all over the joint.



**10**  
**Clean** | Wipe off the residue immediately so that it is flush with the moulding. You can repeat this process one hour later. Use a cloth dipped in pure acetone to remove adhesive residue.



**11**  
**Use DecoFiller to smooth out all visible joints** | If there are minor irregularities on your skirting these can be filled with our FL300. You might find it easier to do this 24 hours after the initial installation.



**12**  
**Prepare for paint** | All Orac Decor® mouldings already have a white primer applied, but still need to be overpainted with a suitable paint. For good adhesion, lightly rub the length of the moldings with a 320 gram sandpaper.

**We also have 6 references pre-finished with RAL9003.**



**13**  
**Decorating** | Allow at least 24 hours before decorating your Orac Decor® products. For best results add an undercoat and top coat of paint. On new builds apply a mist coat and top coat the following day.