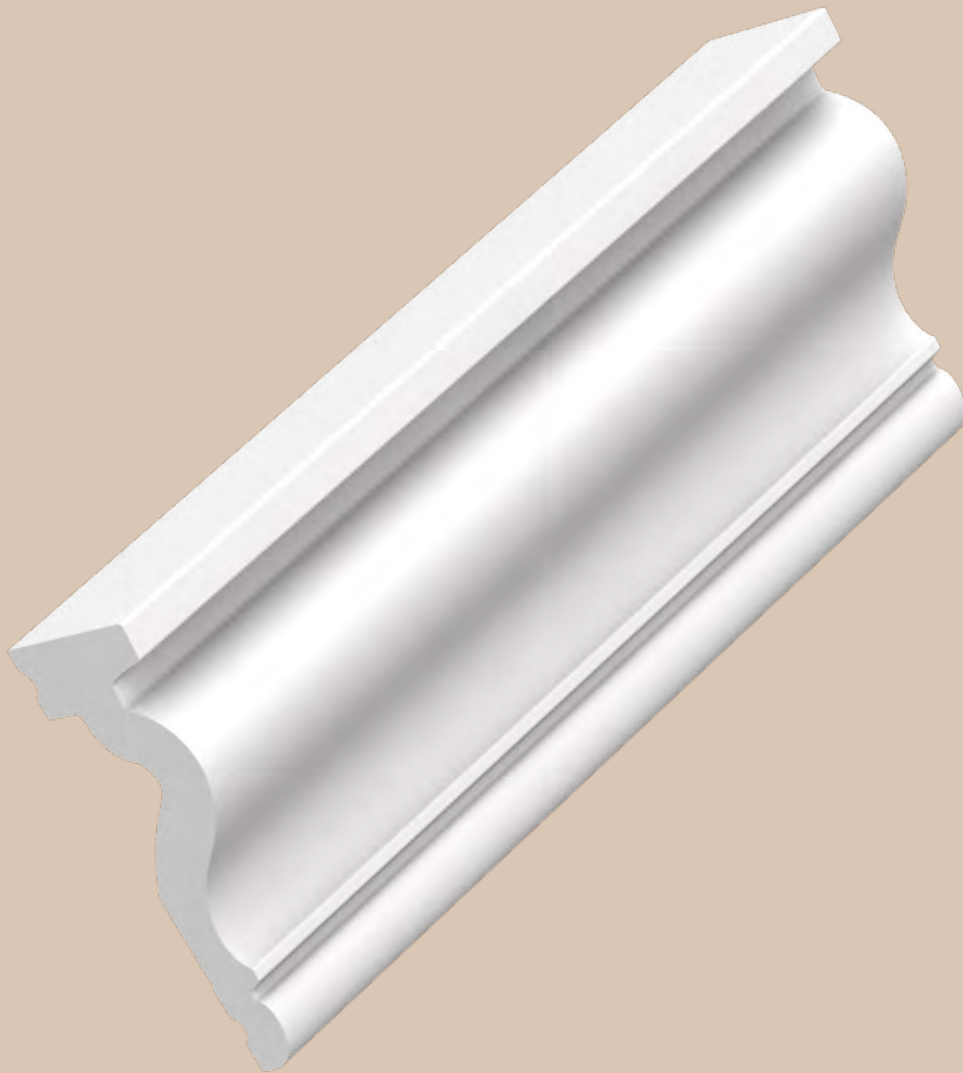


INSTALLATION INSTRUCTIONS

WALL MOLDINGS/PANELS

MPC036-012 - 06/2023



Ready? Set? Go!
✓ INSTALLATION
GUARANTEE

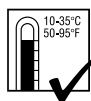
3 steps to the Perfect Finish

WWW.ORACDECOR.COM

1 Ready?

Preparation

ATMOSPHERE



Storage and installation conditions:

For perfect ORAC installations ensure that the room temperature is at least 5°C/ 41° Fahrenheit or more. When products are installed in freezing conditions the adhesives will fail.



Humidity:

Should be between 40 – 70% for perfect installation.



Decorating:

Allow at least 24 hours before decorating your Orac Decor® products.

SURFACE



Dust free



Sand and wash surface



Flat walls & ceilings



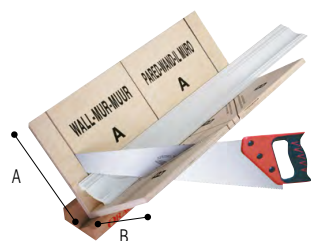
Dry surface



No grease

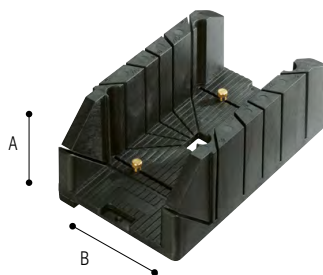
Tools

ACCESSORIES



FB300 (+FB14)

A: 29,7 cm - 11 11/16"
B: 29,1 cm - 11 7/16"



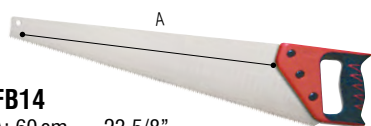
FB13

A: 12,5 cm - 4 15/16"
B: 15,5 cm - 6 1/8"



FB10 (+FB14 + FB15 + A38)

A: 27,5 cm - 10 13/16"
B: 22 cm - 8 11/16"



FB14

A: 60 cm - 23 5/8"

Only available with FB300 or FB10 mitre blocks



FB15



A38

Sample service

Ready to mix-and-match? You can create your dream interior by combining different Orac Decor® products. Can't quite work it out or just not sure what your perfect match is? Then order a sample of your favorite products! Simply search for a product of your liking and request the sample through our contact form:

Product image: P3071



https://www.oracdecor.com/en_us/contact-us

Order your sample



2 Set?

DecoFix adhesives

For Purotouch[®] | Duropolymer[®] | Durofoam[®]
Safety data sheet available at www.oracdecor.com
ONLY FULL GUARANTEE WITH DECOFIX



DecoFix Glue Calculator

https://www.oracdecor.com/en_us/glue-calculator

DecoFix

PRO

FDP500 310 ml > 7 - 8 m
10.5 oz > 23 - 26 ft
FDP600 4200 ml > 65 - 110 m
142 oz > 213 - 361 ft

STRONG



DecoFix

POWER

FDP700 290 ml > 7 - 8 m
9.8 oz > 23 - 26 ft

ULTRA STRONG



FDP500 INSTALLATION ADHESIVE SEAL WALL/CEILING

Strong installation adhesive for interior, porous and dry surfaces

- Strong, water-based acrylic glue
- Remove with humid sponge or cloth
- Paintable after hardening (min. 24 hours)

FDP700 ULTRA STRONG INSTALLATION ADHESIVE SEAL WALL/CEILING

Extra strong installation glue for all surfaces/purposes:

- New build, exterior applications
- Non-porous (tiles, glass, ...) surfaces
- Damp environments, including bathrooms
- Large/heavy profiles, curtain profiles, 3D Wall Covering products
- Cover skirting
- Orac Xterio[®]-cornices

- Extra strong MS polymer glue
- Remove with soap solution
- Paintable after hardening (min. 24 hours)

DecoFix

ULTRA

FX400 270ml > min. 80 m
9.13 oz > min. 262 ft

JOINTS



FX400 JOINT ADHESIVE GLUE MOULDINGS TOGETHER

Strong adhesive for every mitre and end joint, for indoor and outdoor

- White polymer-based adhesive, no shrinkage
- Clean excess adhesive with a painter's knife and soapy water within 10min after application
- Paintable after hardening (min. 24 hours)

DecoFiller

FL300 310 ml > 30 m
10.5 oz > 98 ft

FILLING & FINISHING



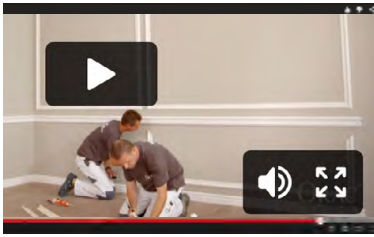
FL300 FILLER

For finishing of gaps cracks and irregularities in profiles or on walls (after installation, between profiles and between profiles and wall/ceiling). For indoor

- Ready to use lightweight acrylic filler, shrink-proof, does not crack
- Remove with humid sponge or cloth
- Rapidly repaintable (after 15 min.)

3 Go!

Install of wall moldings/panels

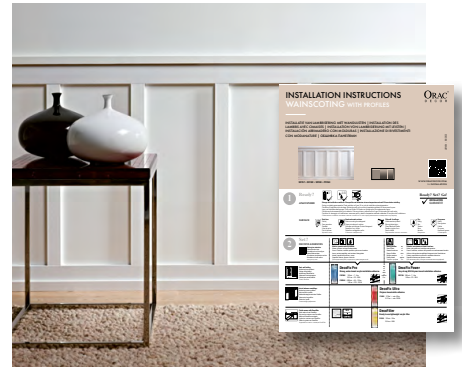


ALSO AVAILABLE



Installation videos

https://www.oracdecor.com/en_us/installation#video



Wainscoting with (multifunctional) profiles

Application examples



From simple and smooth ...



... to finely sculptured. We also offer various corner elements to create lovely wall frames



Many references are available in a flexible format for use on flat or curved surfaces



View our range of multifunctional moldings, which serve as cornice, wall molding and baseboard!



Combine with a wall panel to create a raised baseboard ...



... or similar on the ceiling



Combine with wall paper



... or be creative on the ceiling



Use wall moldings to decorate furniture

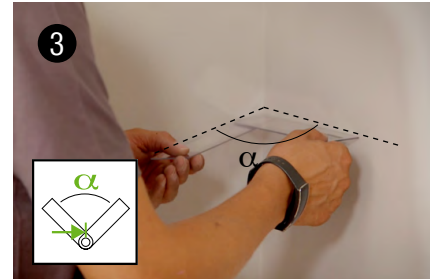
MARK OUT INSTALLATION



1 **Measure** | Measure the distances to wall/floor required.



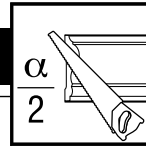
2 **Mark out** | Mark out the lines with a spirit level.



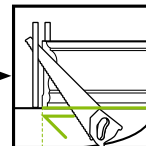
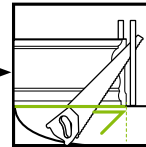
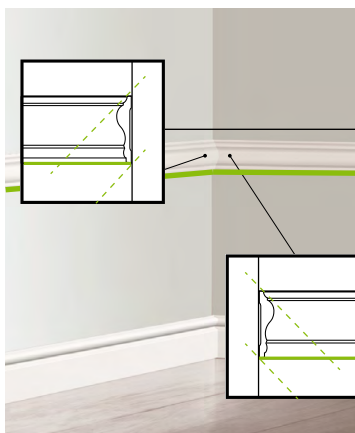
3 **Determine the angle** | Read the size of the angle using our protractor FB15.



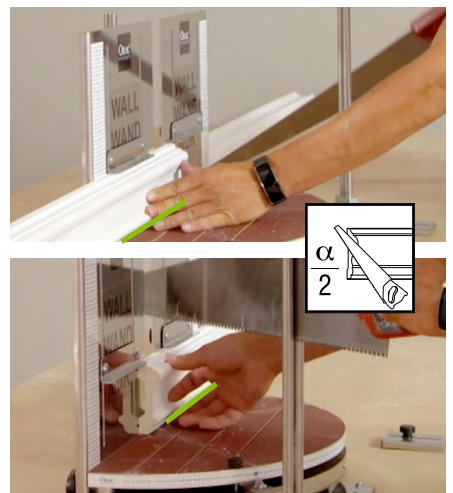
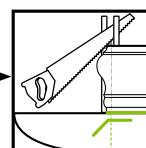
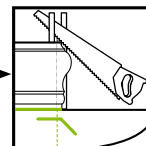
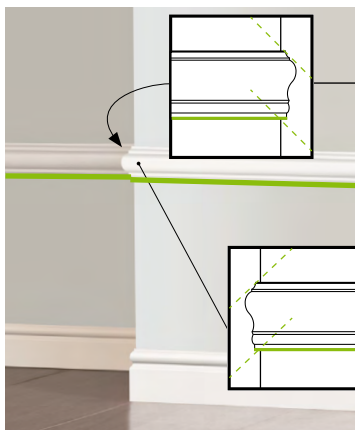
MITRING



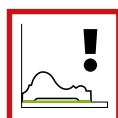
4a Inside corner



4b Outside corner



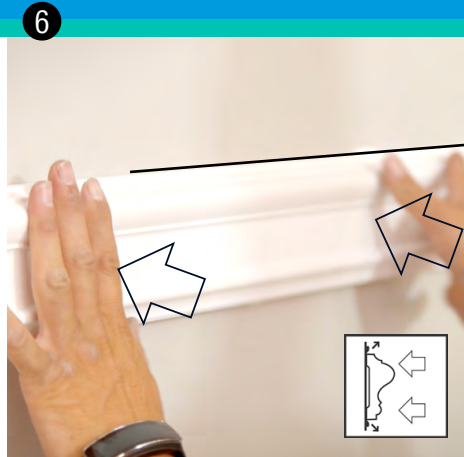
4c Frame



POSITION AND FINISH OFF



Apply DecoFix Pro or Power in V-Fix over the entire length
 | To apply an adequate quantity of DecoFix Pro or Power (see page 3), first take a stanley knife and trim the nozzle at 45deg allowing an application of at least 8mm diameter of adhesive. Use the V groove on the back of most moldings to guide the nozzle as you apply adhesive. Note the V groove will not stick if adhesive is only hidden within the V groove, the adhesive must overspill the indentation to work.



Push firmly | Put the baseboard into place, checking that it is horizontal. When you are confident the baseboard is positioned correctly, firmly press it to the wall across the entire length.



Cleaning overspill
 Any overspill of DecoFix Pro can easily be removed with water.

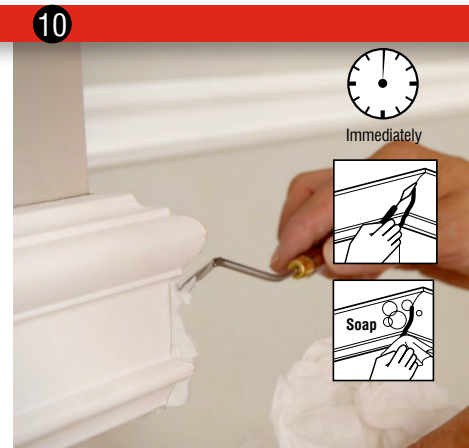
Any overspill of DecoFix Power can easily be removed with water and soap.



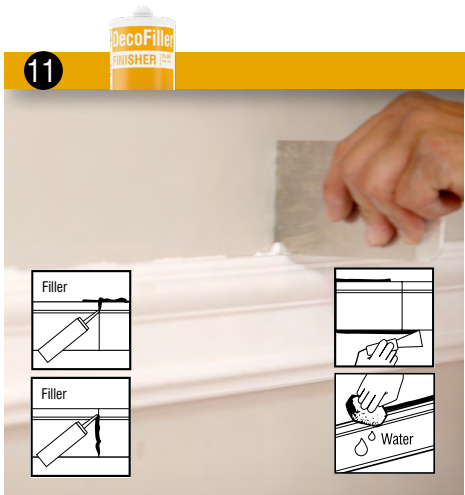
Use DecoFix Ultra on every joint.



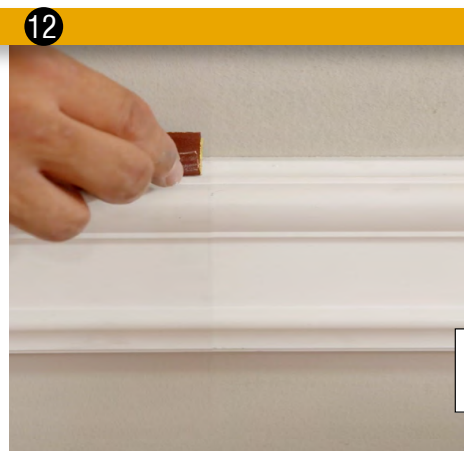
Push firmly and securely into the joint. The adhesive must come out all over the joint.



Clean | Clean excess adhesive with a painter's knife and soapy water within 10min after application.



Use DecoFiller to smooth out all visible joints | If there are minor irregularities (on your wall) these can be filled with our FL300. You might find it easier to do this 24 hours after the initial installation.



Prepare for paint | All Orac Decor[®] moldings are pre-primed in white, but still need to be painted over with a suitable paint. For good adhesion, lightly rub the length of the moldings with a 320 gram sandpaper.



Decorating | Allow at least 24 hours before decorating your Orac Decor[®] products. For best results add an undercoat and top coat of paint. On new builds apply a mist coat and top coat the following day.